



PV INVERTER

Three-Phase / M100_210

Features

- Excellent performance with max. 99% efficiency
- Toggle latch, lightweight and ground mount design
- SUB_1G wireless communication for easy system maintenance
- PC and APP tools enable plant-level commission
- Smart cooling system ensures high yield and performance
- Optional type I+II SPD surge protection



Solar
Power



Commercial
Building



Industrial



Utility



Product Overview

Delta's M100_210 three-phase PV inverter features 99% efficiency and an MPP tracker that can help plant operators to maximize energy yield and profitability.

Besides, M100_210 supports SUB_1G which can realize wireless communication in solar plant and make construction and maintenance easier. The toggle latch, ground mount design, and plant-level commission tools ensure quick and simple installation while optimizing the operation efficiency of PV plants.



Feature Highlights

Wireless Communication / APP

MyDeltaSolar APP provides quick on-site commission and total plant monitoring solution.

Swappable Fan Kit

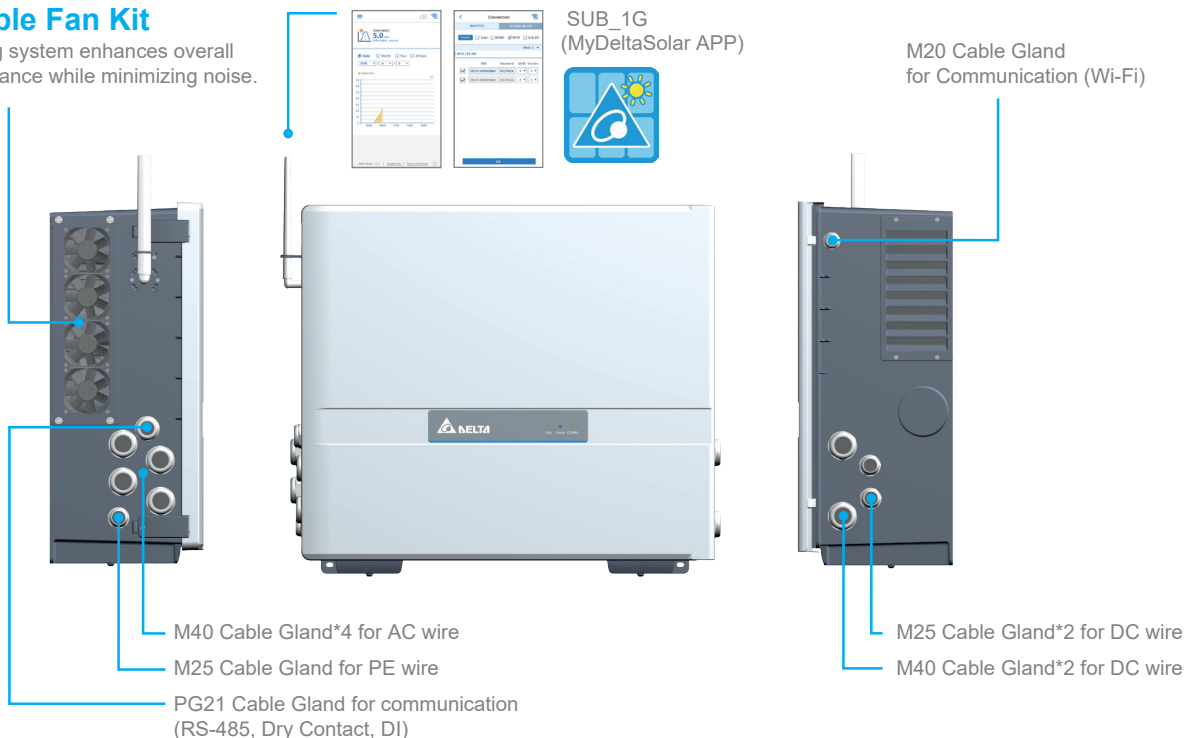
Smart cooling system enhances overall plant performance while minimizing noise.



SUB_1G
(MyDeltaSolar APP)



M20 Cable Gland
for Communication (Wi-Fi)



Fast Installation

The M100_210 supports wall mount installation and ground mount installation, which can shorten installation times and save on the cost for additional racks.

Wall Mount



Ground Mount

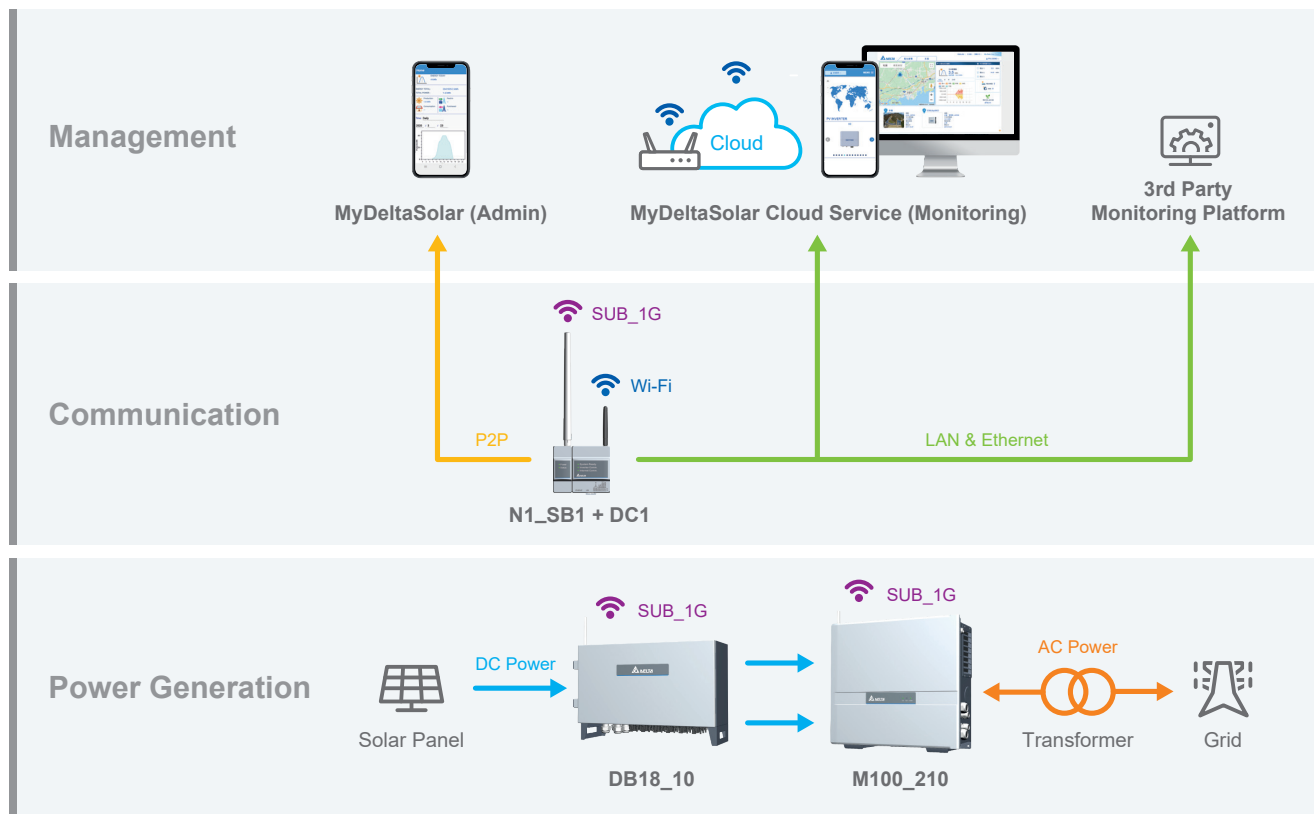


Toggle Latch Design

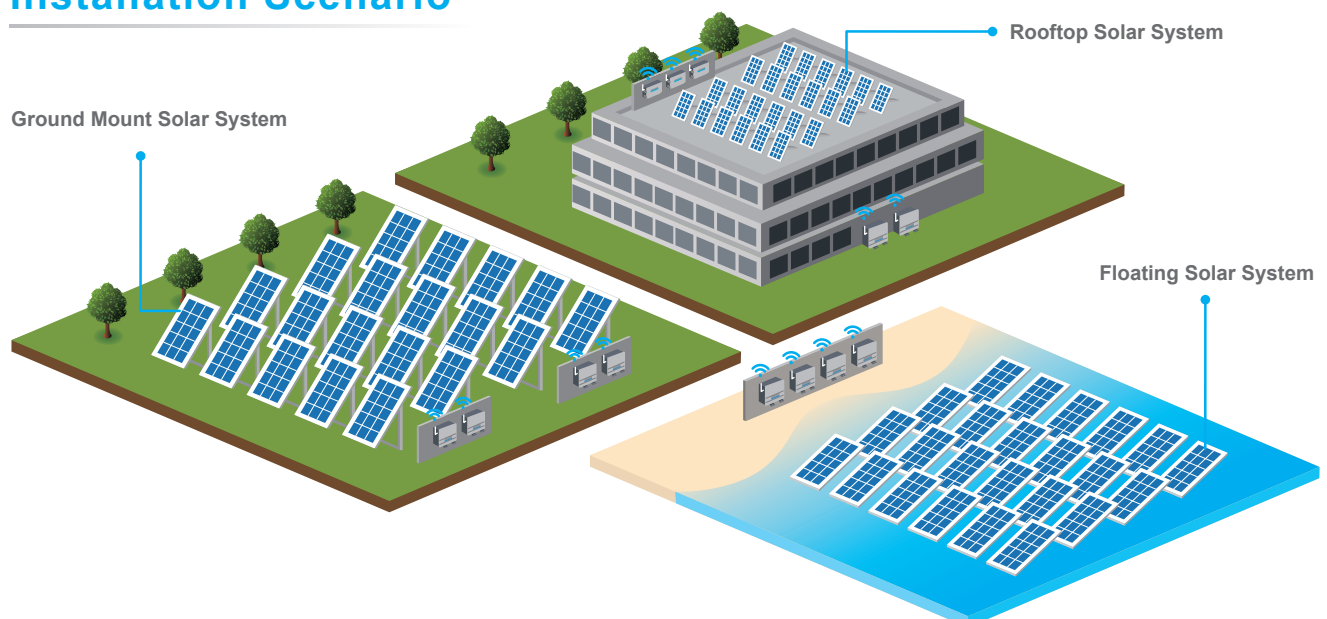
The toggle latch design saves considerable time for maintenance and minimizes the risk of water intrusion.



System Architecture



Installation Scenario



Specifications

Model Number	M100_210			
DC Input				
Max. Input Voltage	1100 V			
Operating Voltage Range	590 - 1000 V			
MPP Voltage Range @ AC 400V	610 - 860 V*			
Nominal DC Voltage	610 V			
MPP Tracker	1			
Max. Operating Current	185 A			
Max. Short Current Capability (Isc)	250 A			
DC Connection Type	Terminal bus bar, Max. 185 mm ² Cu and Al conductor			
Surge Protection	Type II SPD or Type I+II SPD (optional)			
Night time anti-PID	Yes			
AC Output				
Max. Output Power	110 kVA			
Max. Output Current	160 A			
Output Power	100 kW @ 50°C ; 110 kW @ 40°C			
Nominal AC Voltage	AC 400 V , 3Ø3W or 3Ø4W			
AC Voltage Range	80% to 130% of nominal AC voltage			
Operating Frequency Range	50 / 60 ±5 Hz			
Power Factor	0.8 ind ~ 0.8 cap (adjustable)			
Night Time Reactive Power	60 kVAR			
Surge Protection	Type II SPD or Type I+II SPD (optional)			
T.H.D	< 3% at Rated output current			
AC Connection Type	Terminal block, Max. 185 mm ² Cu and Al conductor			
Night Time Consumption	< 3.5 W			
Efficiency				
Peak Efficiency	99.0 %			
Euro Efficiency	98.7 %			
Communication				
Communication Port	RS-485 / SUB_1G, Wi-Fi (optional)			
Communication Protocol	Delta, Sunspec			
Indicator	LED (Alarm, Grid, COMM.)			
Certificate				
Grid Support	IEC 62109-1/-2 IEC 61727	IEC 62116 IEC 61683	EN 61000-6-2 EN 61000-6-3	VPC
General Information				
Protection	Leakage current protection, Low insulation protection, PID elimination			
Operating Elevation	< 4000 m			
Operating Temperature	-25 to 60°C, > 50°C smart de-rating			
Protection	IP66			
Cooling	Smart fan air cooling			
Noise	65.2 dBA @1m, Amb25°C			
Dimension (W x H x D)	699 x 629 x 264 mm			
Weight	67 kg			

* Ambient < 15°C: 610~860V ; Ambient < 30°C: 610~800V ; Ambient < 40°C: 610~720V

* Specifications are subject to change without prior notice.

Loop Solar

715, Emerald Plaza, Sector 65, Gurgaon - 122101

www.loopsolar.com | info@loopsolar.com | Ph: +91-9971136369